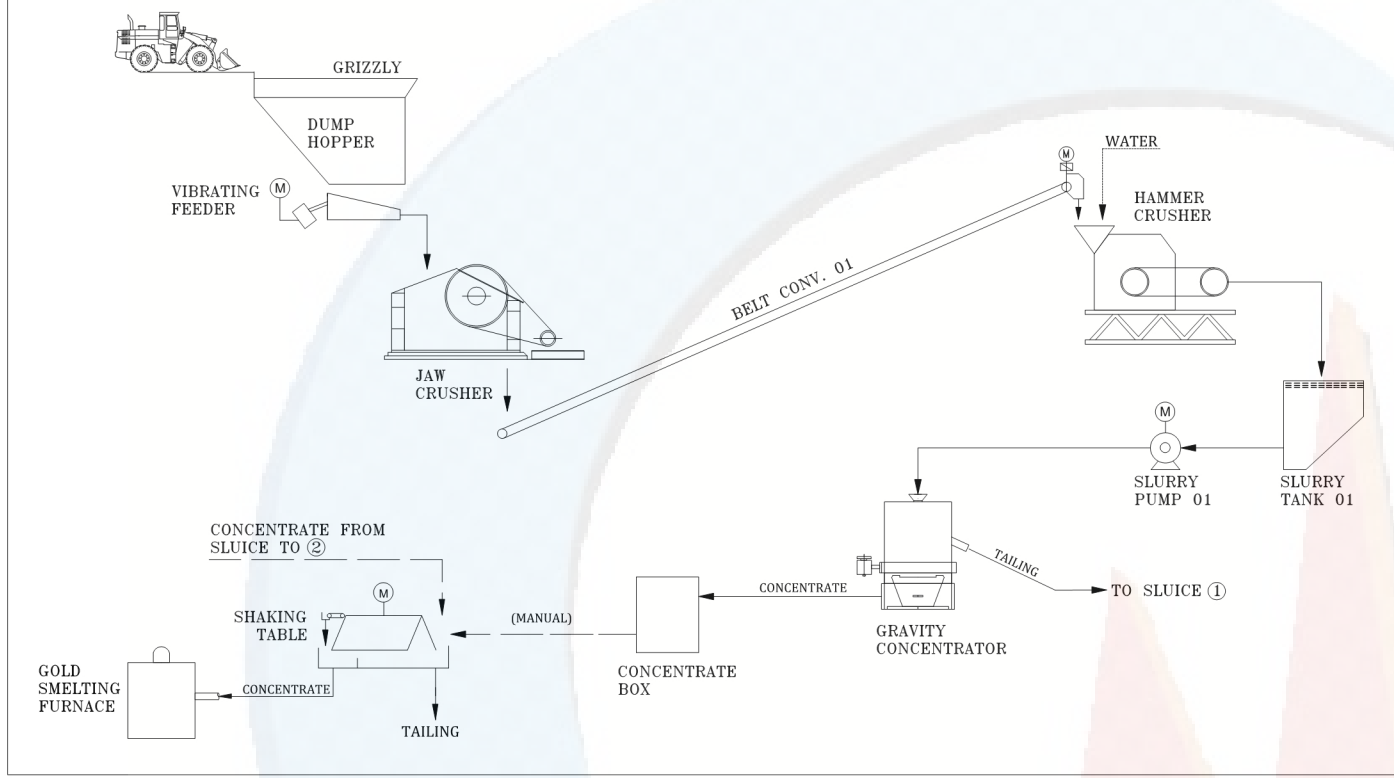


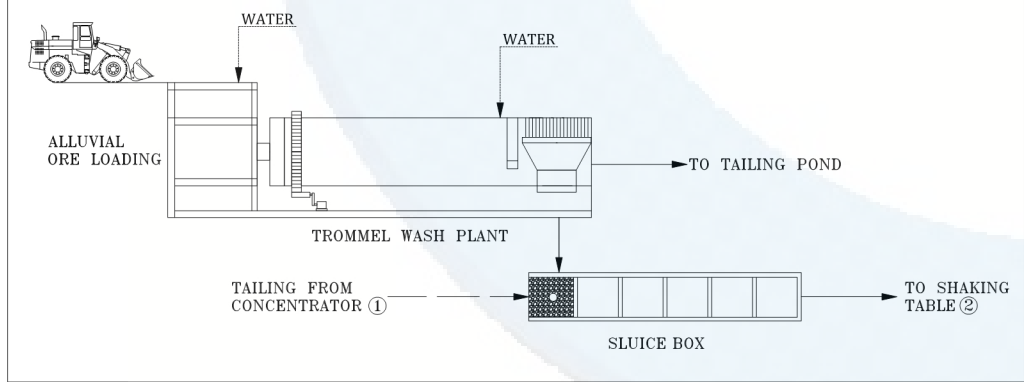
Alluvial gold & hard rock gold processing plant layout

A. HARD ROCK PLANT

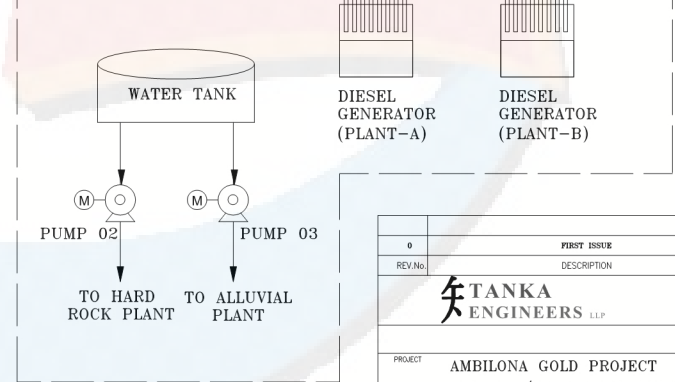


SLNO	EQUIPMENT	DESCRIPTION
A. HARD ROCK PLANT		
1	Dump Hopper with Grizzly	Steel work. 2 m3 capacity, Feed ore size - 200 mm max
2	Vibrating Feeder	12 TPH
3	Jaw Crusher	12 TPH, 200 mm to 30
4	Belt Conveyor	500 mm width, 12 m length, 12 TPH
5	Hammer Crusher	12 TPH, 30mm to <4mm
6	Slurry Tank	1.5 m3 capacity
7	Slurry Pump	30 m3/hr slurry at 50% solids
8	Gravity Concentrator	12-15 TPH
9	Concentrate Box	
10	Shaking Table	
11	Gold Smelting Furnace	
12	Chute Work	
13	Slurry Piping	
B. ALLUVIAL ROCK PLANT		
1	Trommel Screen	20 TPH
2	Sluice Box	To suit trommel screen
C. UTILITIES		
1	Water Tank	
2	Water Pump- To Hard Rock Plant	
3	Water Pump- To Alluvial Plant	
4	Diesel Generator For Plant	
5	Cabling from DG to plant	
6	Plant lighting	
7	Mechanical tool set	1 lot

B. ALLUVIAL PLANT



C. UTILITES



0	FIRST ISSUE	14/AUG/2019	RSK	VYF	VYF
REV.No.	DESCRIPTION	DATE	DRAWN	CHKD.	APPD.
		DRAWN BY	CHKD. BY	APPD. BY	
		RSK	VYF	VYF	
DATE	14/AUG/2019	SCALE	NTS		
PROJECT	AMBILONA GOLD PROJECT				
DRAWING TITLE	ALLUVIAL/HARD ROCK GOLD ORE PROCESSING PLANT				
PROJECT No.	111	DRAWING No.	0111-P-20-001-R1		REV. 1
SHEET - 1 OF 1					